



# Construction Solutions

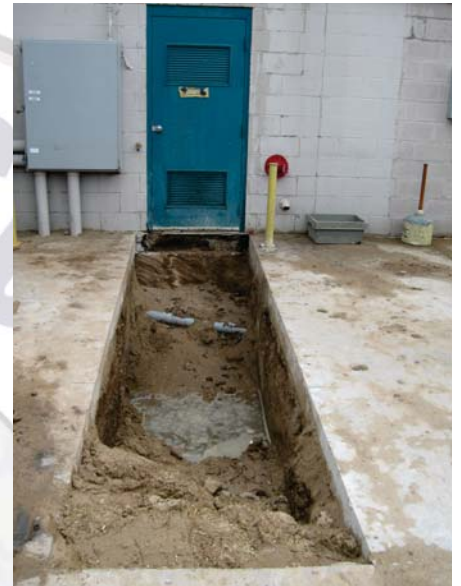
Ground Penetrating Radar & Engineer Consulting

## Private Utility Locating

### When 811 One-Call can't help

By law before you dig you are required to call the local One-Call service to mark out utilities. These only include public utilities, not privately owned utilities.

- Verify One-Call locates
- Mark out Privately owned utilities:
  - Electric Lines
  - Telephone / Data
  - Sewer / Storm / Drainage
  - Water / Irrigation
  - Gas / Oil / Steam / Product Lines



### Customer's Challenge:

A contractor must dig in an area that is known to have both private and publicly owned utilities.

- Accuracy of One-Call is in question
- Utility is privately owned and cannot be marked by One-Call
- Drawings of area are not reliable or don't exist for underground utilities
- Depth to known utility is unknown

### Our Solution:

Ground Penetrating Radar, or GPR for short, has the ability to image subsurface targets below the surface to identify the location of utilities.

- Able to locate both metallic and non-metallic pipes
- Identify depth to target
- Locate abandoned lines not on drawings
- Verify One-Call markouts

#### Ground Penetrating Radar Applications:

##### Concrete Locates:

- Rebar
- Tension Cables
- Conduits
- Voids
- Delaminations
- Depth of Cover Analysis

##### Environmental Locates:

- Utilities
- Underground Storage Tanks
- Voids/Sinkholes
- Unmarked Graves
- Water Leaks
- Soil Layer Mapping

##### Transportation Uses

- Bridge Deck Corrosion
- Railroad Ballast Fouling
- Asphalt Overlay Thickness
- Pavement Thickness